

P/N KE-CV1 CHECK VALVE

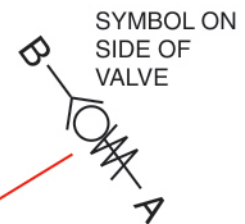
FOR THE K&E FLOW CONTROLLED WATER PUMP

PREVENTS DAMAGE TO THE WATER PUMP CAUSED BY INCORRECT HOSE CONNECTION WHEN PROPERLY INSTALLED IN THE OUTLET PORT OF THE FLOW CONTROL BLOCK

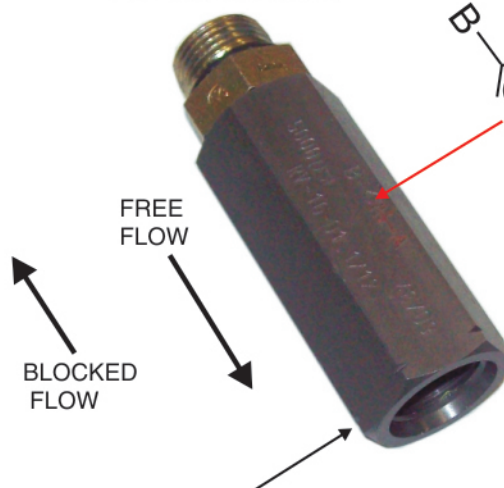


SHOWN INSTALLED IN THE OUTLET SIDE OF THE FLOW CONTROL BLOCK OF THE WATER PUMP

#12 MALE "O" RING BOSS



SYMBOL ON SIDE OF VALVE



BLOCKED FLOW

FREE FLOW

NOTCHES AROUND THE OUTLET SIDE OF THE CHECK VALVE

#12 FEMALE "O" RING BOSS



Hydraulic, Mechanical, Drivetrain And Electro-hydraulic
Troubleshooting, Testing, Repair And Sales

www.ketechinc.com

Ph. 618-932-2245 Fax 618-937-3200

K&E TECHNICAL, INC.
1432 Highway 37 S.
P.O. Box 465
West Frankfort, IL 62896