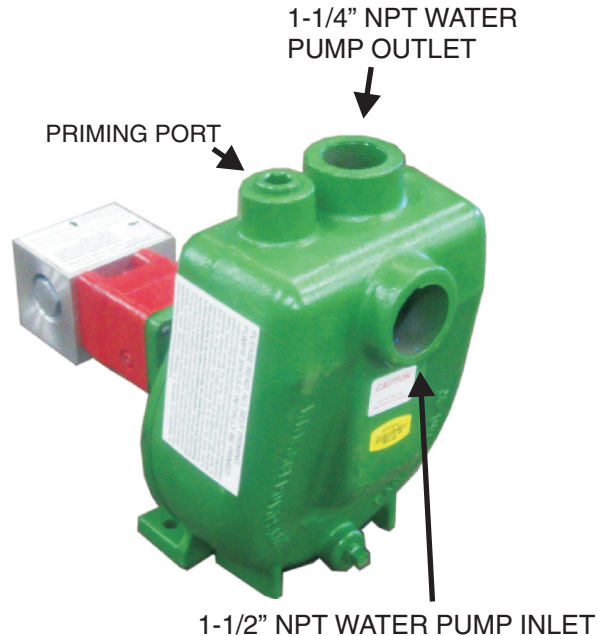


# P/N KE-FCSPWP FLOW CONTROLLED, SELF PRIMING

## WATER PUMP ASSEMBLY

THIS IS A SELF PRIMING WATER PUMP. THE PLAIN CENTRIFUGAL VERSION OF THIS PUMP IS P/N KE-FCWP.

**ALL SELF PRIMING PUMPS SHOULD BE PRIMED INITIALLY AND WILL SELF PRIME AFTER THAT.**



#12 ORB "IN" AND "OUT" HYDRAULIC PORTS

**THIS PUMP ASSEMBLY INCORPORATES A FLOW CONTROL VALVE THAT LIMITS THE FLOW TO THE MOTOR TO 8 GPM NO MATTER HOW MUCH FLOW IS PUT TO THE "IN" PORT. ALL FLOW ABOVE 8 GPM IS BYPASSED DIRECTLY OUT THE RETURN PORT**



MAXIMUM RETURN LINE BACK PRESSURE PERMITTED IS 250 PS.I. OR MOTOR SHAFT SEAL FAILURE WILL RESULT.



Hydraulic, Mechanical, Drivetrain And Electro-hydraulic Troubleshooting, Testing, Repair And Sales

[www.ketechnical.com](http://www.ketechnical.com)

Ph. 618-932-2245 Fax 618-937-3200

**K&E TECHNICAL, INC.**  
1432 Highway 37 S.  
P.O. Box 465  
West Frankfort, IL 62896



Hydraulic, Mechanical, Drivetrain And Electro-hydraulic  
Troubleshooting, Testing, Repair And Sales

[www.ketechanical.com](http://www.ketechanical.com)

Ph. 618-932-2245 Fax 618-937-3200

**K&E TECHNICAL, INC.**

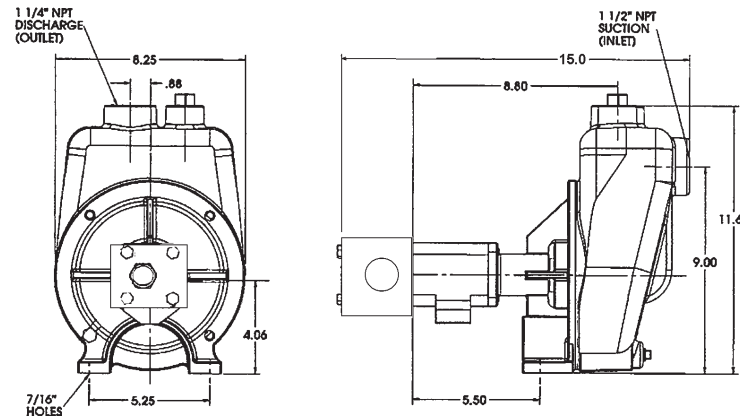
1432 Highway 37 S.

P.O. Box 465

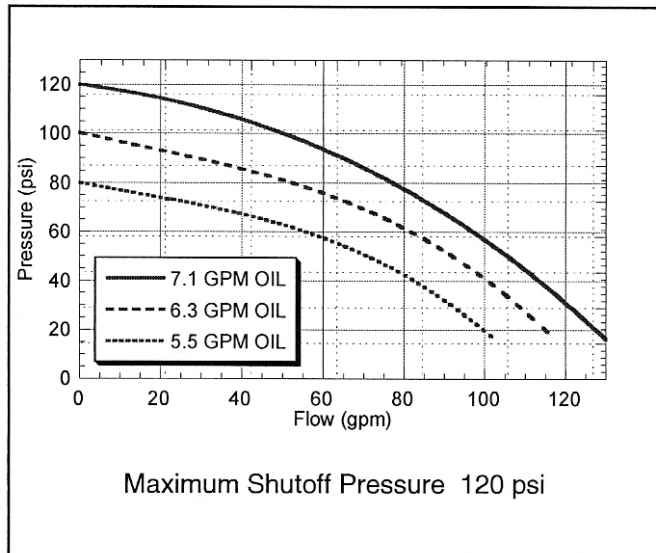
West Frankfort, IL 62896

# High Performance Hydraulic Motor Driven Self Priming Pump WITH FLOW CONTROL VALVE

## DIMENSIONS



## PERFORMANCE CHART



- Suction 1-1/2" Discharge 1-1/4"
- Self-Priming
- Integral Needle Valve bypasses up to 9 GPM (34 LPM) on Open Center Systems
- Optional Severe Duty Silicon Carbide Mechanical Seal
- Chemical Resistant Valox® or Optional Cast Iron Impeller
- Stainless Steel Shaft and Wear Ring

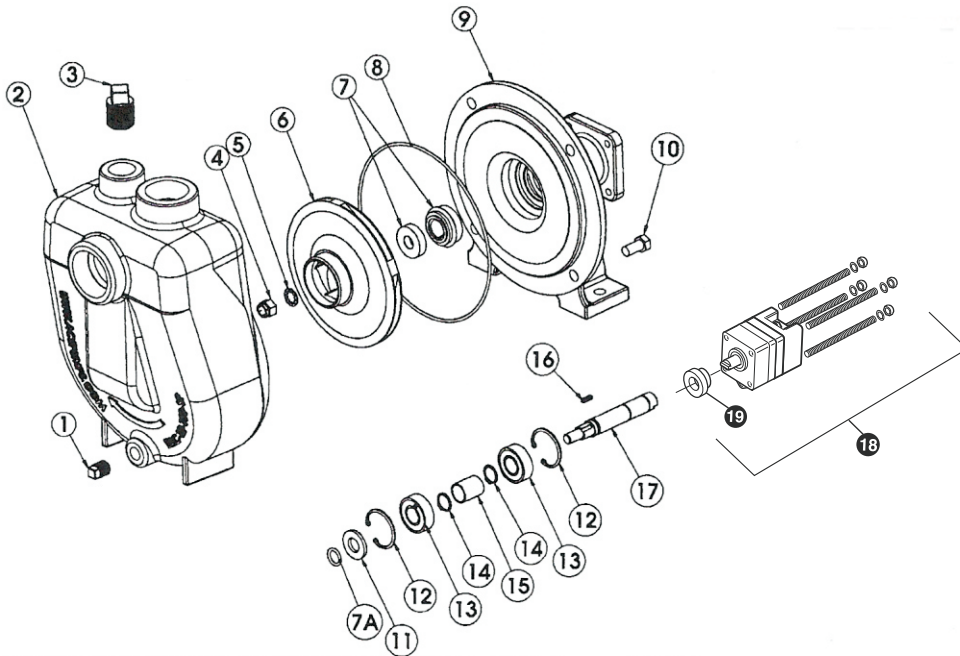
Valox® is a registered trademark of GE Plastics.  
Viton® is a registered trademark of DuPont Dow Elastomers.



HYDRAULIC MOTOR SPEED/  
WATER FLOW MAY BE SLOWED  
BY OPENING (TURN CCW)  
NEEDLE BYPASS VALVE. INITIAL  
SETTING TO BE BACKED OUT  
1/4 TURN FROM CLOSED.



**TO PURCHASE INDIVIDUAL PARTS ON THIS PAGE PLEASE SPECIFY THAT THEY ARE FOR A KE-FCSPWP WATER PUMP**



REF. #	PART NUMBER	EDP #	DESCRIPTION	REQ.
1	20750	20750	Pipe plug, drain, 1/4" NPT	1
2	BAC-12-150-SP	40254	Volute, self-priming, 1-1/2" x 1-1/4"	1
3	41105	41105	Pipe plug, fill, 3/4" NPT	1
4	BAC-23-A	40391	Nut, 3/8" NF, cad plated	1
4	BAC-23-A-SS	40392	Nut, 3/8" NF, stainless steel (optional)	1
5①②	BAC-24-HYD-SS	40400	Washer, 3/8" star, stainless steel	1
6	BAC-26-150-P	40446	Impeller, Valox, keyway	1
6	BAC-26-150-CI	40445	Impeller, cast iron, keyway (optional)	1
7①	BAC-7V	40151	Seal, carbon/ceramic/Viton (includes 40160 O-Ring)	1
7②	BAC-7SC	40152	Seal, silicon carbide/Viton (includes 40160 O-Ring) (optional)	1
7A①②	40160	40160	O-ring, shaft seal	1
8①②	BAC-4-150	40015	O-ring, body seal	1
9	BAC-14-150-HYD	40305	Mounting frame (for 200 Series hydraulic motor)	1
10	40950	40950	Cap screw, 3/8" NC x 3/4" hex head	4
10	40930	40930	Cap screw, 3/8" NC x 3/4" hex head, stainless steel (optional)	4
11	BAC-54	41130	Slinger	1
12	BAC-33	40810	Snap ring, internal, BAC-14 mounting frame	2
13	BAC-37	40870	Ball Bearing, sealed, BAC-6 shaft	2
14	BAC-32	40790	Snap ring, external, BAC-6 shaft	2
15	BAC-32-S	40795	Spacer for BAC-6 shaft	1
16	BACH-25	40420	Key, 1/8" x 1/8" x 1/2"	1
17	BAC-6-HYD-SS	40061	Shaft, 5/8" diameter, keyway and tang slot, stainless steel	1
18	BAC-75-HYD-206-KE		HYDRAULIC MOTOR - MODIFIED FOR FLOW CONTROL	1
19	S200	40161	Seal support spacer for 200 Series HYD motor	1
①	RK-FMC-150	52710	Repair kit for FMC-150 series pump	-
②	RK-FM CSC-150	52711	Repair kit for FMC-150 series with silicon carbide shaft seal	-
#	RK-BAC-75-HYD-L	41374	Repair kit for 200 Series motor with high pressure lip seal	-



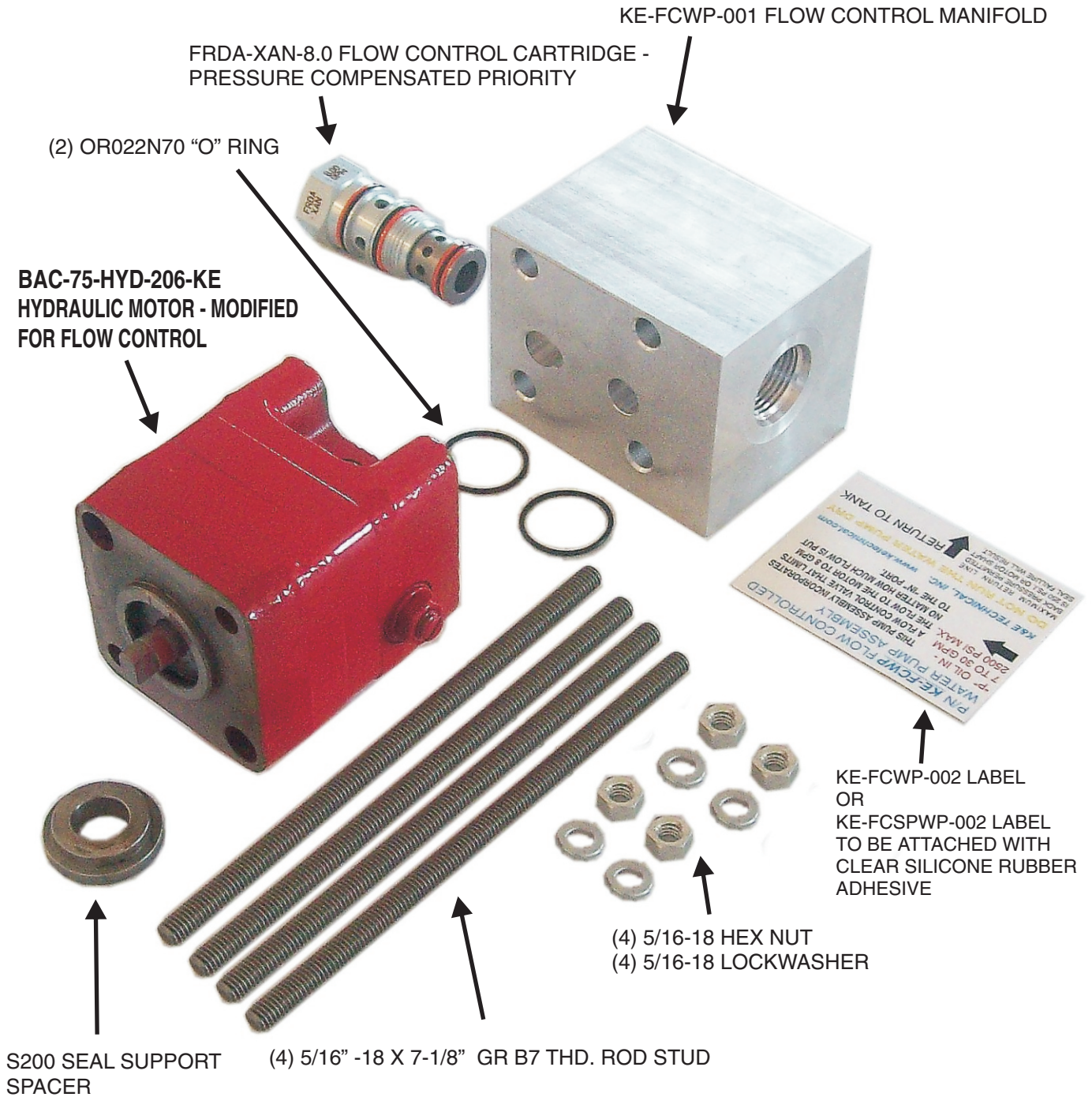
Hydraulic, Mechanical, Drivetrain And Electro-hydraulic  
Troubleshooting, Testing, Repair And Sales

[www.ketechnical.com](http://www.ketechnical.com)

Ph. 618-932-2245 Fax 618-937-3200

**K&E TECHNICAL, INC.**  
1432 Highway 37 S.  
P.O. Box 465  
West Frankfort, IL 62896

**TO PURCHASE INDIVIDUAL PARTS ON THIS PAGE PLEASE SPECIFY THAT THEY ARE FOR A KE-FCWP OR A KE-FCSPWP WATER PUMP**



FILENAME: KE-FCSPWP INFORMATION.PDF

Hydraulic, Mechanical, Drivetrain And Electro-hydraulic  
Troubleshooting, Testing, Repair And Sales

[www.ketechinc.com](http://www.ketechinc.com)

Ph. 618-932-2245 Fax 618-937-3200

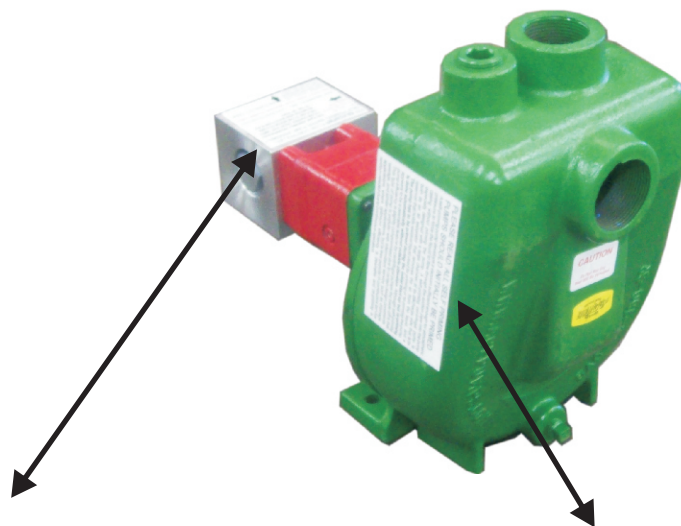
**K&E TECHNICAL, INC.**

1432 Highway 37 S.

P.O. Box 465

West Frankfort, IL 62896





**P/N *KE-FCSPWP* FLOW CONTROLLED SELF PRIMING WATER PUMP ASSEMBLY**

**“P” OIL IN - 7 TO 30 GPM 2500 PSI MAX** THIS PUMP ASSEMBLY INCORPORATES A FLOW CONTROL VALVE THAT LIMITS THE FLOW TO THE MOTOR TO 8 GPM NO MATTER HOW MUCH FLOW IS PUT TO THE “IN” PORT.



**K&E TECHNICAL, INC.** [www.ketechnical.com](http://www.ketechnical.com)

**DO NOT RUN THE WATER PUMP DRY**

MAXIMUM RETURN LINE BACK PRESSURE PERMITTED IS 250 PS.I. OR MOTOR SHAFT SEAL FAILURE WILL RESULT.



**RETURN TO TANK**

P/N *KE-FCSPWP-002* LABEL TO BE ATTACHED WITH CLEAR SILICONE RUBBER ADHESIVE

**PLEASE READ: ALL SELF PRIMING PUMPS SHOULD INITIALLY BE PRIMED**

A self-priming pump develops a vacuum sufficient enough for atmospheric pressure to force the liquid to flow through the suction pipe into the pump casing without priming the pump. A self-priming centrifugal pump is especially designed with a large chamber at its discharge side that acts both as an air separator that removes the air from the liquid, and a reservoir that holds residual liquid used for priming or re-priming the pump. **The pump has to be primed during the initial start-up but re-priming is done automatically without outside attention.** Although self-priming appears to be a desirable feature for centrifugal pumps the trade-off is that pump efficiency is slightly compromised due to certain design constraints. This type of pump is popular with intermittent service such as drainage, sewage, and similar applications, but is less popular in continuous service applications where optimum efficiency is desirable and re-priming is seldom needed due to continuous operation.

P/N *KE-FCSPWP-003* LABEL TO BE ATTACHED WITH CLEAR SILICONE RUBBER ADHESIVE



FILENAME: KE-FCSPWP INFORMATION.PDF

*Hydraulic, Mechanical, Drivetrain And Electro-hydraulic  
Troubleshooting, Testing, Repair And Sales*

**[www.ketechnical.com](http://www.ketechnical.com)**

Ph. 618-932-2245 Fax 618-937-3200

**K&E TECHNICAL, INC.**  
1432 Highway 37 S.  
P.O. Box 465  
West Frankfort, IL 62896